

GIOPATO & COOMBES

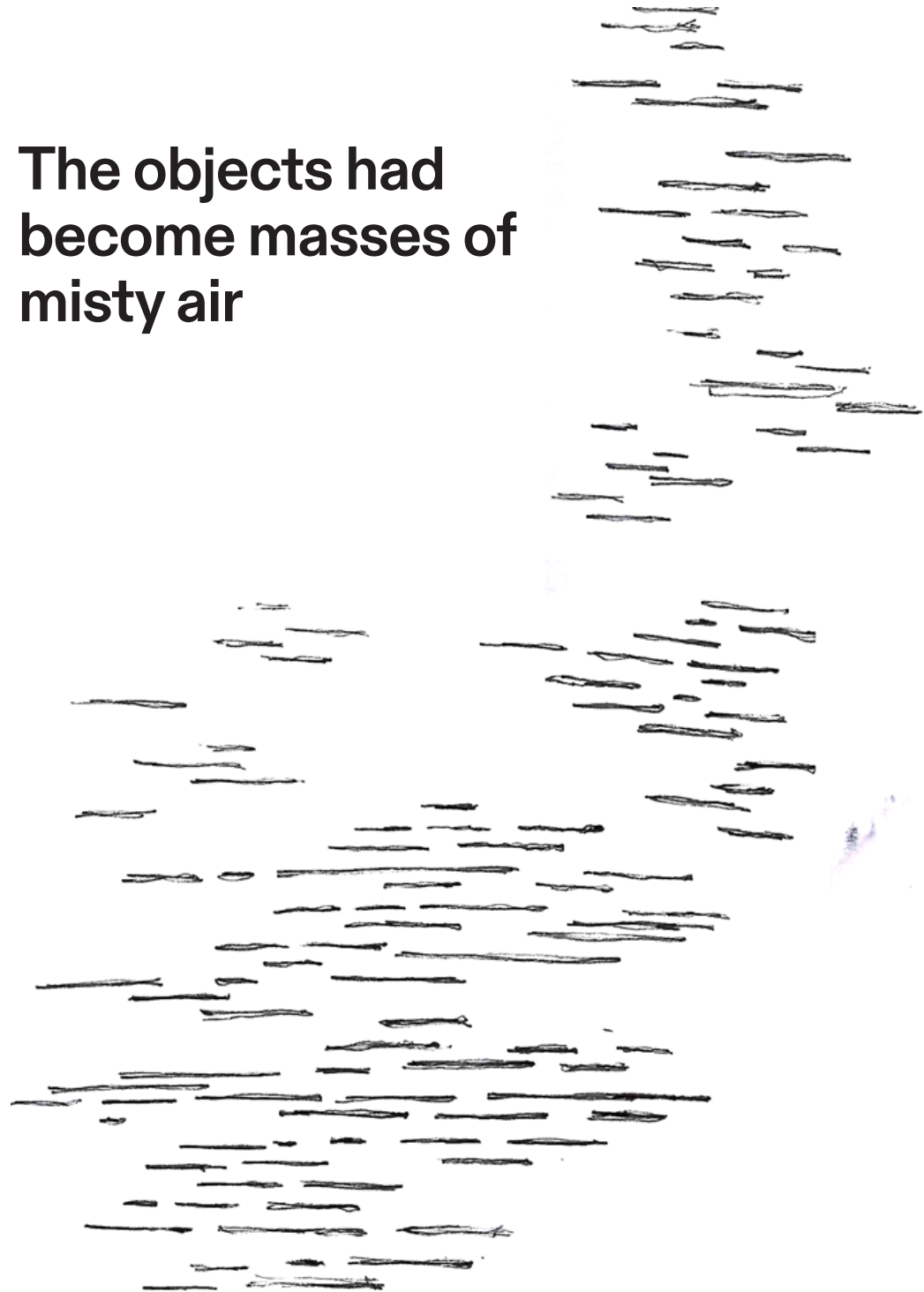
Near and far had
changed, while the
objects had become
masses of misty air.

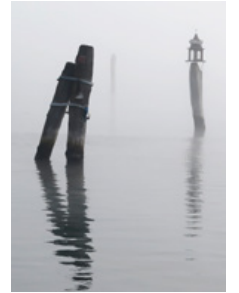
From this *spatial
chiaroscuro*, the Bruma
project was born.

BRUMA
a thousand *landscapes*

GIOPATO & COOMBES

**The objects had
become masses of
misty air**

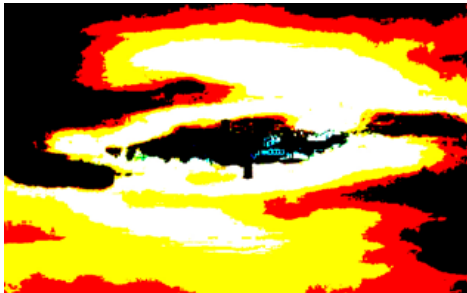
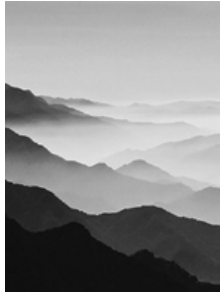




1. INSPIRATION

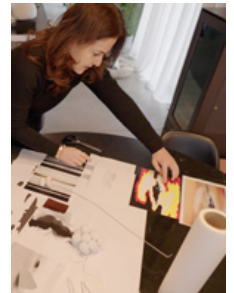
A winter day, still and silent. A place
suspended in time and space.
A soft mist had arrived slowly, ending
up enveloping everything around us.
Hiding and revealing objects, shapes,
lights, and shadows at the same time.
Near and far had changed, as had our
perception of space.





2. BETWEEN VISIBLE AND INVISIBLE

The perspective depth had been transformed into a rhythm of overlapping planes, while the objects had become masses of misty air, to be glimpsed between the invisible and the visible. We began to let these masses expand, to observe their interaction with voids and solids, working on their dimensionality.





EXPERIMENTING WITH WAX



3. A WORKSHOP OF IDEAS

In our studio, our design vision for Bruma came to life step by step. We experimented with wax and its dense forming shape, isomalt, a kind of sugar that looks

like handblown glass, viscous compounds, and fluid masses of glass, all combined with research on edge lighting technology solutions.

EXPERIMENTING WITH ISOMALT

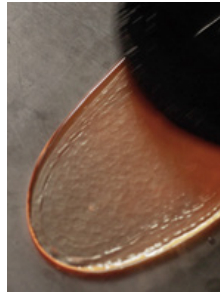




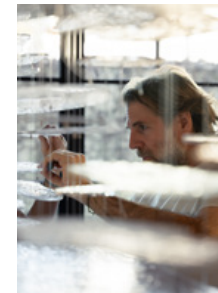
We started by giving full freedom to material experimentation. Combining cutting-edge lighting technology and rational research.



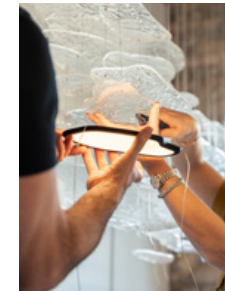
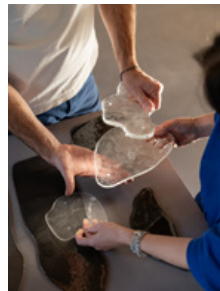
Focusing on the spatial movement of the mist, for each composition we created a natural perspective rhythm, thanks to the choice of placing the thin glass modules at different heights.

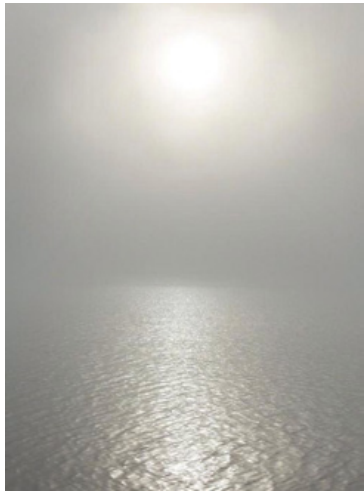


Among these and with a detailed positioning study, we inserted the modules with illuminating profiles.



We worked the glass matter by hand, using the cast glass technique, to create different modules of glass, in a semi-transparent slightly raw texture, like thin condensations of mist.





This glass texture is called “pulegoso”, recalling a unique Muranese artisanal technique that creates a myriad of little spotty bubbles (“puleghe”) inside the glass matter, when worked by hand. The effect evokes the soft muffled reflection on the water on a foggy day.



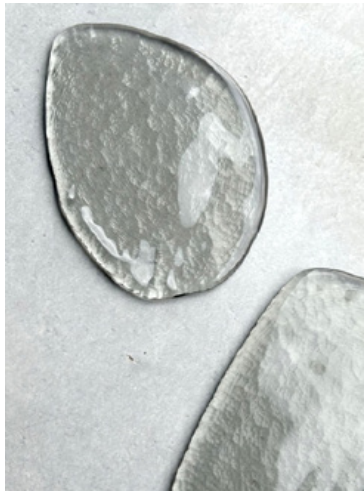


The interior space and a silent landscape

The Bruma collection is a balance between density and absence. Something that leaves space, and this is an integral part of a structural, compositional, and material level.

From different angles, the interaction with the lamp becomes perspectival. If we look at the compositions on the frontal and horizontal plane, the modules are invisible and the lamp seems to disappear into the background; as we get closer, we see them grow and take shape. Like an echo of the impalpable presence of the mist and how we interact with it. A silent sculpture of light, something like a trompe-l'oeil effect.





For the glass finishings, we have also imagined a version of the glass pieces in a smokey nuance. Each glass module has a black color profile and looks pearl grey when seen overall in the whole composition. Whilst darker, the grey version enhances a very balanced rendering between shadows and light emission.






BRUMA CHANDELIER LANDSCAPE 150



BRUMA CHANDELIER CASCADE 185



The luminous sculptures of Bruma collection reveal a new sense of three-dimensionality, and a new way of perceiving and experiencing the interaction with the landscape, inside the living spaces. This is the feeling we wanted to create in our latest installation, A Thousand Landscapes. An immersive panorama with a quite peaceful, meditative allure. We designed an environment of misty, essential, silent compositions, that embrace the visitor's eye and presence, bringing him to a suspended, timeless place. From the inspiration of a place that can be glimpsed, to a thousand landscapes.



**From this spatial
chiaroscuro, the Bruma
project was born.**



Giopato & Coombes is a creative studio that brings together a design approach and art research into their projects, founded in Italy by Cristiana Giopato and Christopher Coombes, an Italian-British architect and designer couple. Their practice uses light as a medium merging material and immaterial, to redefine interaction spaces by capturing everyday moments and elevating them to a collective celebration of memories and sensations. They call it the Supernatural Daydream, an experience that begins with our every day and goes beyond boundaries. For them, the creative process is aimed at evoking this experience, which is unique for everyone, and sharing it with one light creation at a time.

CREDITS

Studio Brinth	P. 5 - 11
ArtDrunk	P. 5 - 11
Notoo Studio	P. 14 - 23
Mattia Balsamini	P. 26

GIOPATO & COOMBES



GIOPATOCOOMBES.COM
INSTAGRAM.COM/GIOPATOCOOMBES
#supernaturaldream
#bruma

GIOPATO & COOMBES STUDIO

Viale G. G. Felissent 116, Treviso
tel: +39 0422 697997

GIOPATO & COOMBES GALLERY

Via San Maurizio 19, Milano
gallery@giopatocoombes.com
tel. +39 02 43419899